



TVSoundBox®

Wireless TV Speaker

Operating Guide

Model
TVSB



Thank you for purchasing this TV SoundBox®. Please read this operating guide very carefully before use and keep it for future reference. If you have any questions, please feel free to contact our Customer Care Department.

Toll-Free Help Line: 866.376.9271 (8AM-5PM PST, M-F)

IMPORTANT SAFETY INSTRUCTIONS:

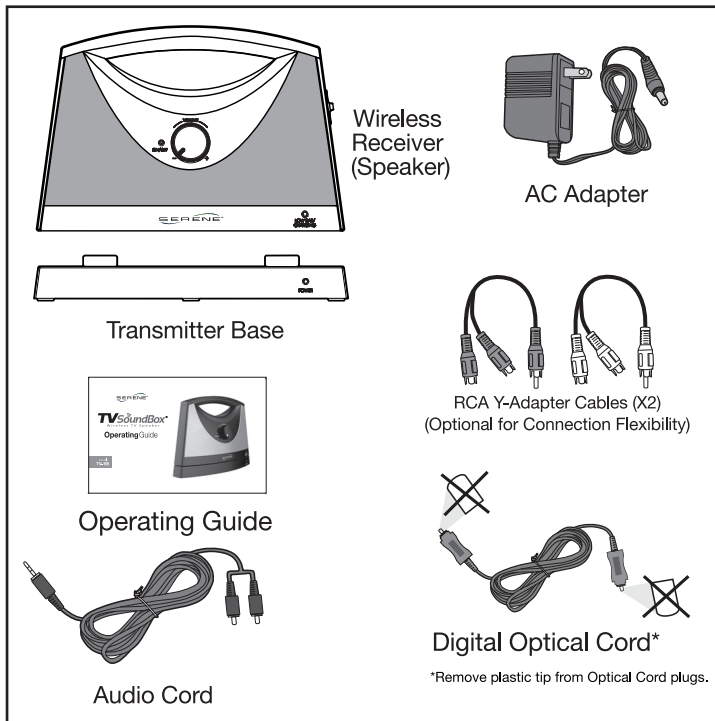
Please read these instructions carefully before using the TV SoundBox®.

- Always keep the system dry. Do not immerse in water.
- For your safety, do not attempt to open the unit or battery compartment. Attempting to open or opening the battery compartment violates your warranty.
- TV SoundBox® uses a lithium ion battery. Please observe the safety and handling instructions for the lithium ion batteries. Please dispose of the unit/used batteries properly, following any local regulations. Do not dispose of the unit/used batteries in the household trash. Do not incinerate. Take the equipment to a nearby recycle center.

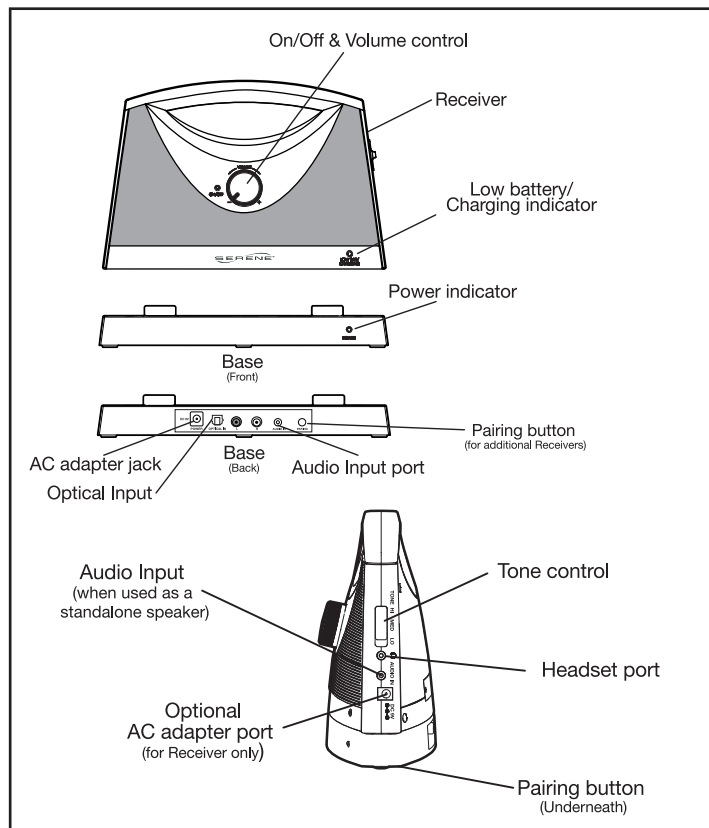
- Do not unplug by pulling on cord. To unplug, grasp the plug, not the cord. Unplug from outlet when not in use and before servicing or cleaning. Do not operate any device with a damaged cord or plug, or after the device malfunctions, or is dropped or damaged in any manner. Return device to the nearest authorized service facility for examination, repair or electrical or mechanical adjustment.
- TVSoundBox® is intended for home and personal use only.

PACKAGE CONTENT CHECK:

Your TV SoundBox® is packaged with all of the items shown. If anything is missing, please contact our Customer Care Department immediately.



FEATURE IDENTIFICATIONS:

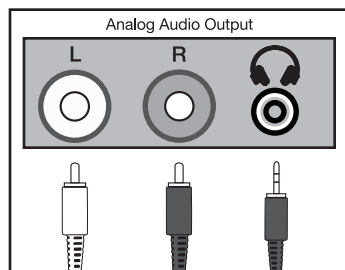


CONNECTION & SET UP:

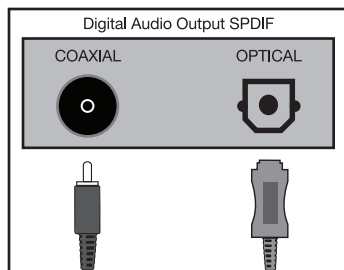
Select an Audio Connection:

Locate the Audio Out connector on the back of your TV.

Example 1:



Example 2:

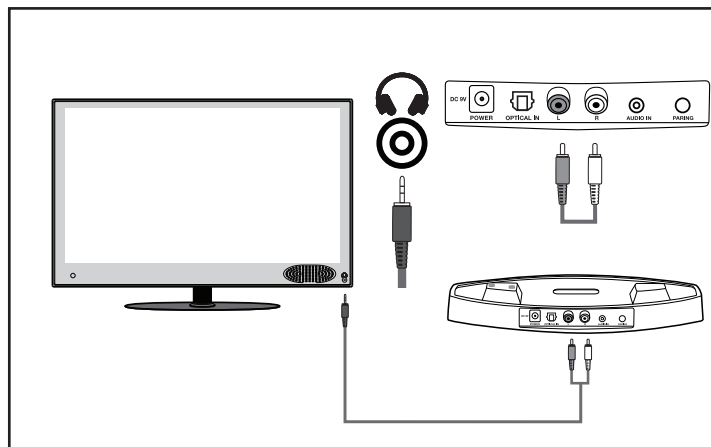


1. If your TV has analog output connectors (see example 1), the included audio cords are ready to use with the TVSoundBox®.
2. If your TV has digital output connectors (see example 2) you will need a special audio convertor and cable to use with the TVSoundBox®. (Optical cable or Coaxial cable)

For TV's with Audio-Out Ports:

If your TV has a headphone jack, it is an analog output. Use the provided audio cable and connect the base of the TV SoundBox® to your TV as shown below.

Note: in most cases, the TV speaker volume will be muted when using this type of connection

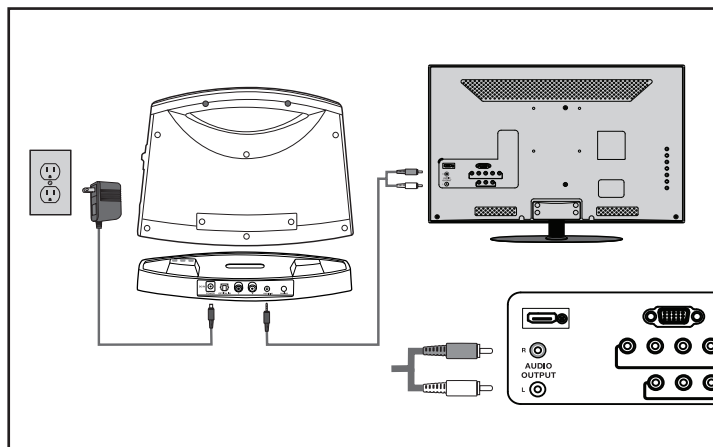


CONNECTION & SET UP (con't):

For TV's with Audio-Out Ports (RCA type):

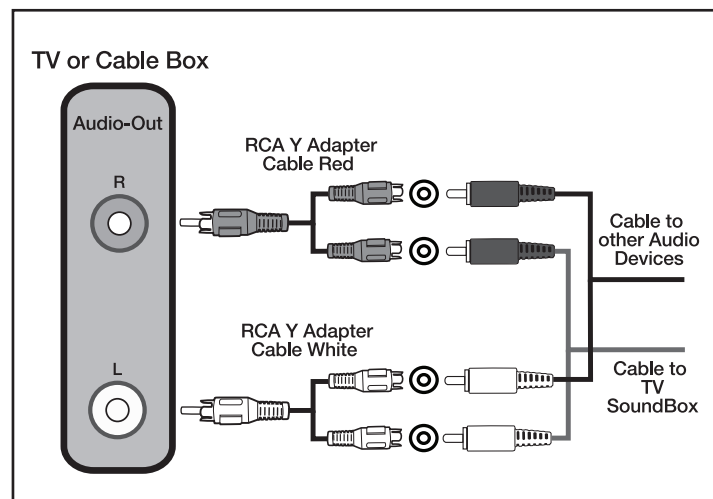
If your TV has audio output RCA type ports on the back of your TV, it is an analog output. Use the provided audio cable and connect the base of the TV SoundBox® to your TV as shown below.

Note: In most cases, TV speakers are **NOT** muted with this type of connection.



Audio Connection Expansion (for Analog Outputs):

If your TV or satellite/cable box analog output ports have been used with other audio devices, the TV SoundBox® can be connected to your TV or satellite/cable box by using the provided RCA Y-Adapter Cables. (There are 2 cables with color-coded connector ends to match the L/R audio output connectors.) Connect the TV SoundBox® as shown below.

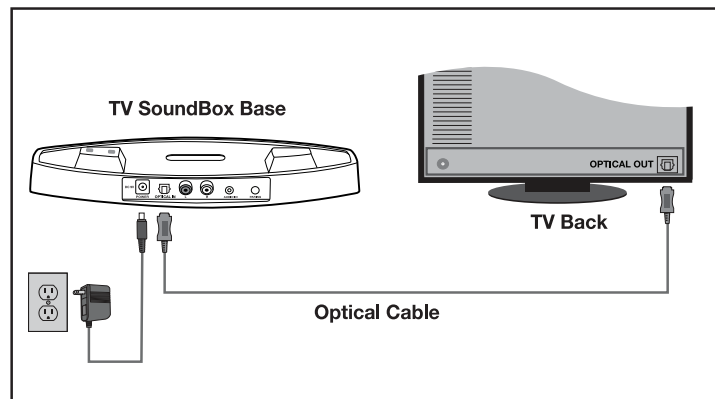


CONNECTION & SET UP (con't):

For TV's with Digital Output Port (Optical):

If your TV has a digital optical audio output port, using the included optical cable, connect it to the base of the TV SoundBox as shown below. In most cases, TV speakers are **NOT** muted with this type of connection.

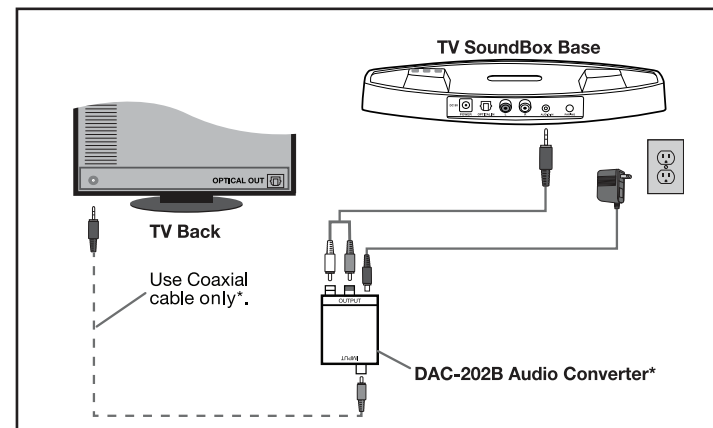
PLEASE NOTE: Newer TV's have the option to set digital audio output to either **Dolby** or **PCM**. The TV Soundbox **only works with PCM audio format**, simply set your TV to PCM digital output. Contact your TV manufacturer for assistance if necessary.



For TV's with Digital Audio Output Ports (Coaxial):

If your TV only has a digital coaxial audio output port, you must use a TV Digital Connector. This item is sold separately and is available from Serene Innovations. Connect it to the TV SoundBox as shown below.

Note: In most cases, TV speakers are **NOT** muted with this type of connection. Please consult your TV manual for setting your TV speaker.



*This item is sold separately and is available from Serene Innovations.

Note: The converter **DOES NOT** come with a coaxial cable. Converter **ONLY** supports **PCM**.

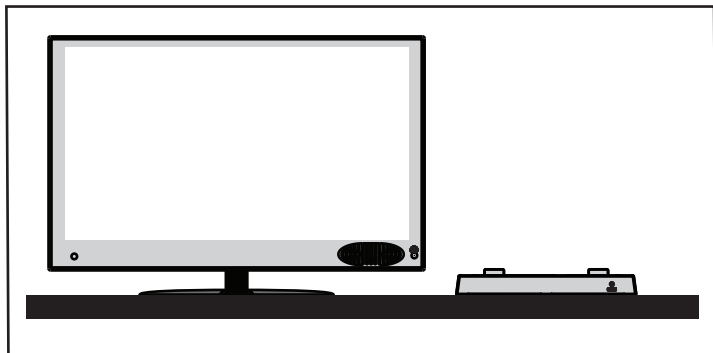
CONNECTION & SET UP (con't):

Dolby Digital 5.1 and Pulse Code Modulation (PCM) TV Output:

Newer TV's have the option to set digital audio output to either Dolby or PCM (You can find what type of output your TV has in the audio/sound section of your TV manual). The DAC-202B only works with PCM audio format, simply set your TV to PCM digital output for the converter to work. If you can't switch to PCM, contact our customer service for assistance.

Placement of TVSoundBox® Base:

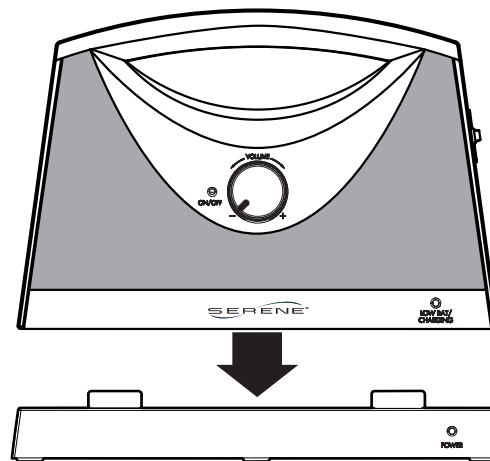
Place base of the TVSoundBox® on top of your TV stand or on top of your TV, as shown below.



BATTERY CHARGING:

Place the receiver on the base (as shown) for charging for 6+ hours before first use. During charging, the Low Battery/Charge indicator blinks. When it is fully charged, the indicator light will stop blinking and stay steadily lit. A fully charged battery will give you up to 8 hours of listening time.

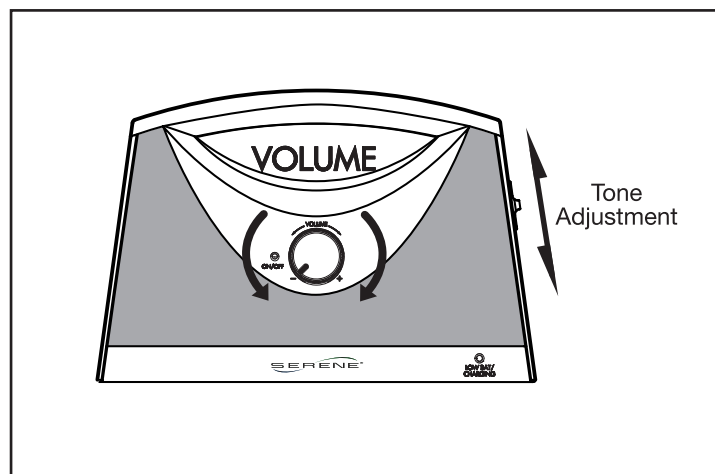
When the receiver is not in use or when the Low Battery indicator blinks, place the receiver on the base for recharging.



OPERATION:

On/Off, Volume and Tone control:

1. Rotate the knob to turn receiver **On** or **Off** and to adjust its volume.
2. You can turn your TV speaker to **Low** or to **Off**. On some TV's, you may need to use your remote to go into the TV's Menu to achieve an optimal audio/speaker setting. Please refer to your TV user manual for details.
3. To conserve battery power, the receiver will shift into standby mode if no audio signal is received from the



OPERATION (con't):

base (after your TV is turned off) for a period longer than three minutes. The volume **ON/OFF** indicator will be off during this standby time (applies to units produced after Fall, 2014). When audio signal is received, the receiver will re-activate.

Note: If the receiver has hibernated too long and missed the contacts with the base, rotate the knob, turn off the receiver and then turn the receiver back on again to re-sync with the base.

4. Set the Tone Control to a position that enables you to hear and understand the dialog best.

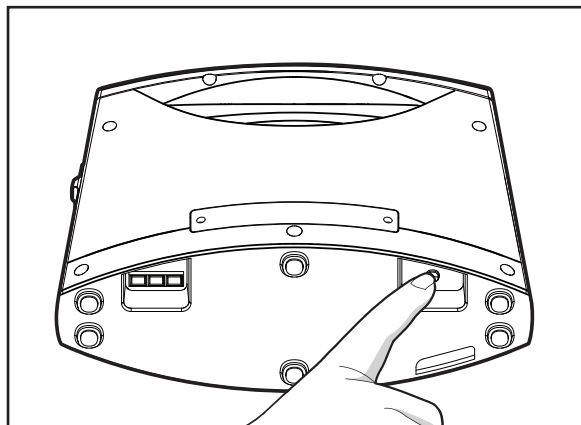
PAIRING ADDITIONAL RECEIVERS:

You can add up to 50 receivers to work with your base. Each added receiver, must be “paired” with the base as follows:

- Make sure your new receiver is fully charged.
- Make sure your current base and receiver is working properly and audio is playing on the receiver.
- Continue the audio playing to the base and receiver.

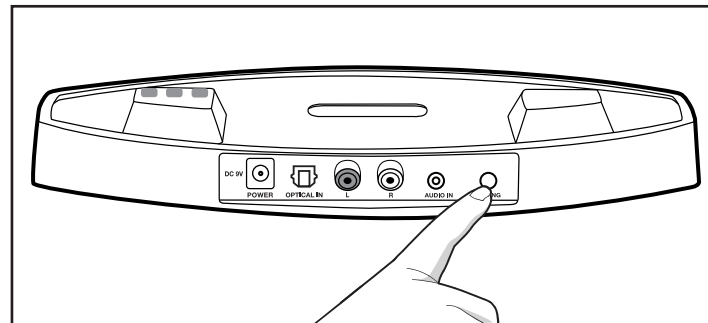
PAIRING ADDITIONAL RECEIVERS (con't):

1. Turn the new receiver **ON**.
2. Press and hold (about 5 seconds) the **PAIRING** button on the bottom of the receiver until the **ON/OFF** indicator starts blinking. Pairing period is approximately 20 seconds.



Bottom of receiver (Speaker)

3. Press and hold (about 3 seconds) the **PAIRING** button on the back of the base until the power indicator starts blinking. It will start pairing with the new receiver.

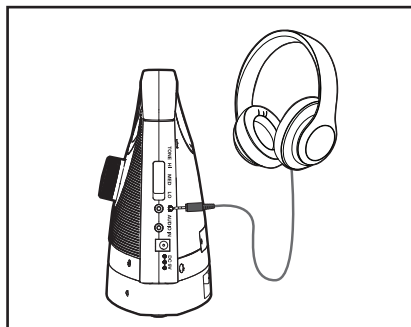


Back of transmitter (Base)

4. As soon as pairing is successful (less than 2 seconds), the new receiver's **ON/OFF** indicator will stop blinking, and audio sounds will be played within 5 seconds.
5. Repeat these steps again if pairing is not successful.

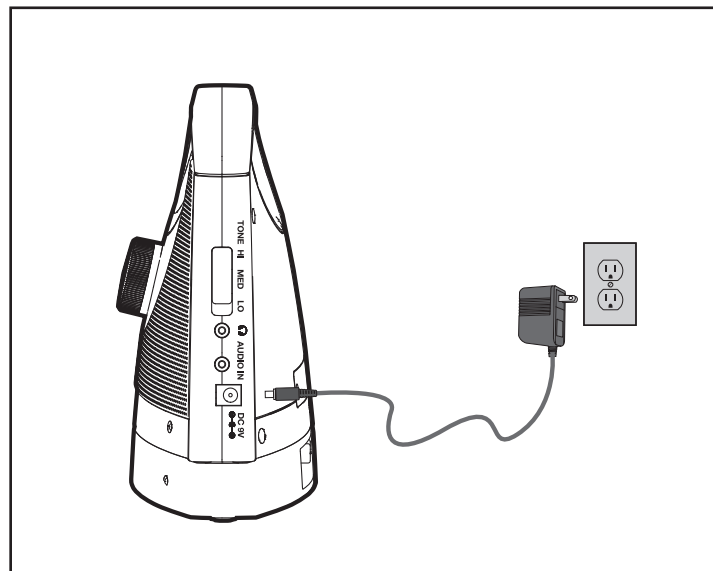
USING A HEADPHONE:

Plug in your headphone to the headphone jack, as shown. No sound will be emitted from the speakers. Adjust the headphone volume by rotating the volume knob.



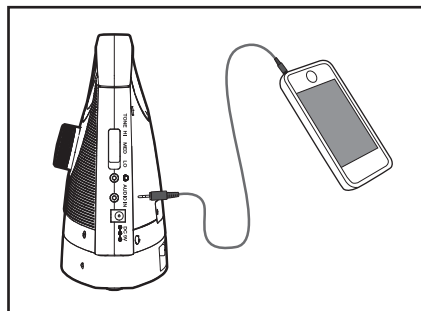
ADDITIONAL POWER SOURCE FOR YOUR RECEIVER (OPTION 1):

Purchase an additional AC Adapter (available from Serene Innovations) and plug it into the receiver as shown. This way, you can place and keep the receiver at the same location without the need to return it to the base for recharging.



USING THE RECEIVER AS A STAND-ALONE SPEAKER:

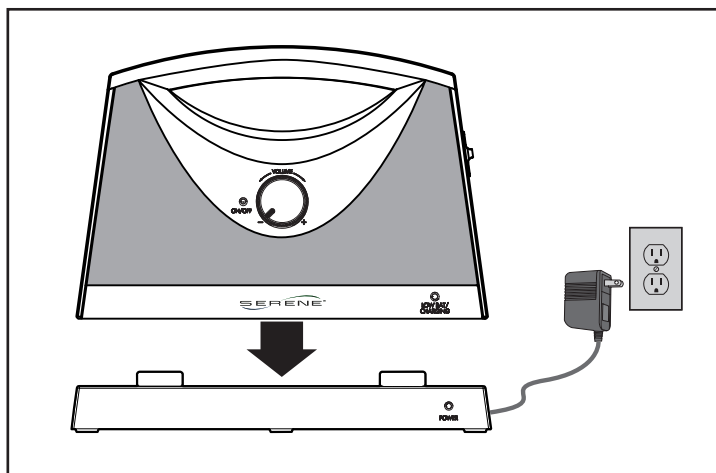
Connect your audio source to the audio input jack on the side of the receiver, as shown.



ADDITIONAL POWER SOURCE FOR YOUR RECEIVER (OPTION 2):

Purchase an additional charger base with AC adapter, (available from Serene Innovations), and place the receiver on the base for recharging, as shown. This way, you can charge the receiver in the same manner without plugging and unplugging the AC adapter jack.

Note: this additional base is for charging **ONLY**, no audio connections are provided with this base.



TROUBLESHOOTING:

- No sound from the receiver- Check all connections to ensure that all the cords are firmly connected at the back of the base and TV. Also, confirm that the receiver is not more than 100 feet away from the base.
- There is sound from the TV speaker, but no sound from the receiver- Check your TV speaker setting by going into the TV Menu, using your TV remote and ensuring the TV is sending audio signals to the base.
- The Low Battery/Charging indicator keeps blinking on the receiver- This indicates that the battery is low and needs to be placed on the base for recharging. When fully charged, the blinking will stop (in about 3 hours). If the blinking does not stop, check to make sure the receiver is firmly connected and properly aligned to the base.

CLEANING AND MAINTENANCE:

Unplug the AC Adapter from the wall. Then, use a dry, soft cloth to clean and dust the outside surfaces and the charging contacts on the base. Do not immerse the receiver in water.

OPTIONAL ACCESSORIES:

The following accessories enhance your TV listening experience. Please contact Serene Innovations or our nearest dealer to order:

Model #	Item #	Description
TVSB-RX	SB1002	Additional receiver only
TVSB-APTR	SB1003	Additional AC adapter
TVSB-BASE	SB1004	Additional charging base
DAC-202	TV6007	TV audio connector (U.S.)
DAC-202EU	TV6008	TV audio connector (Europe)
Please Call		TVSB Audio Cable
Please Call		RCA Y-Cable (set of 2, red/white)

SPECIFICATIONS:

(Final product may vary.)

Transmission:.....	2.4 GHz Radio Frequency
Speakers:.....	2x5W Class D
Speaker Battery:.....	Built-in Lithium Ion Battery
Digital Optical Cable.....	TOSLINK rectangular type
Audio Format Support.....	LPCM 44kHz, 96kHz
Operating Range:.....	Over 30m (100 feet) in an open field
AC Adapter Power:.....	100-240VAC/50-60 Hz input; 9VDC 1.5A output
Listening Time:.....	About 8 hours (at 50% volume.
Dimensions:.....	24x17x8 cm (9x7x3.25")
Weight:.....	800 gm. (1.7 lb.)

WARRANTY SERVICE INFORMATION:

Your **TV SoundBox®** comes with a one year limited warranty. We warrant during this warranty period from the date of purchase to the original consumer that **TV SoundBox®** will be free from defects in materials and workmanship under intended home use. In the event that **TV SoundBox®** fails to function properly within one year of original purchase due to defects in materials or workmanship, return the unit (freight prepaid) with proof of purchase (sales receipt or packing slip, no exceptions) to Serene Innovations

Serene Innovations will either repair or replace the unit (with a re-furnished unit or unit of equal condition) and return it to you (using UPS/USPS ground shipping) at no cost to you (there will be a nominal additional shipping charge if it is shipped to out-side the 48 Continental U.S. states).

This warranty does not apply to any product that has been accidentally damaged due to: abuse, misuse, negligence, use on electrical frequency or voltage other than marked on product and/or described in this manual. Defects or errors caused by unauthorized alterations, repairs and/or tampering are also not covered by this warranty.

Incidental or Consequential Damages:

Neither Serene Innovations, nor the retailer, dealer or selling distributor has the responsibility for any incidental or consequential damages, including, without limitation, commercial loss of profit or for any incidental expenses, loss of time or inconvenience. Some states do not allow exclusion or limitation of incidental or consequential damage, so the above limitation or exclusion may not apply to you.

This warranty gives you specific legal rights. You may have other legal rights that vary from state to state.

If a defect covered by this warranty should occur, promptly contact a Customer Care Representative by phone or log on to www.sereneinnovations.com to obtain a Return Merchandise Authorization number and shipping instructions before returning the product to us. Any shipment without a RMA will not be accepted and will be returned to you at your expense.

Any authorized returned product must be accompanied with proof of purchase and a brief description of the problem. For out of warranty repair and service, please contact our Customer Care Department for directions.

FCC INFORMATION FOR USA CUSTOMERS ONLY:**Part 15 of FCC Rules Information**

This device complies with Part 15 of the FCC rules. Operation is subject to the following two conditions: (1) this device may not cause harmful interference, and (2) this device must accept any interference received, including interference that may cause undesired operation. This equipment has been tested and found to comply with the limits of a Class B digital device, pursuant to Part 15 of FCC rules. These limits are designed to provide reasonable protection against harmful interference in residential installation.

This equipment generates, uses, and can radiate radio frequency energy and, if not installed and used in accordance with the instructions, may cause harmful interference to radio communications. However, there is no guarantee that interference will not occur in a particular installation. If this equipment does cause harmful interference to radio or television reception, which can be determined by turning the equipment off and on, you may try one the following methods to correct the interference:

1. Where it can be done safely, re-orient the receiving television or radio antenna.
2. To the extent possible, relocate the television, radio, or other receiver, with respect to the cordless phone.
3. Connect the cordless phone AC adapter into a different electrical outlet.
4. Consult the dealer or an experienced radio/TV technician for help.
Modification: Any modification not expressly approved by the manufacturer of this device could void the user's authority to operate the device.

This Class B digital device complies with Canadian ICES-003, RSS 201 Issue 8.



Serene Group, Inc. • 14731 Carmenita Rd., Norwalk, CA 90650 • (866) 376-9271 • www.sereneinnovations.com